



# SHALIMAR

GLOBALLY ACCEPTED MOULDED & BONDED  
RUBBER COMPONENTS

# SHALIMAR



An ISO 9001 : 2008 Company

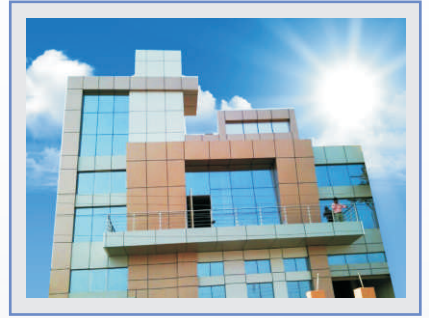
ISO  
9001:2008  
REGISTERED



## ABOUT US

**SHALIMAR** is New Delhi, INDIA based ISO: 9001-2008 Company specializes in the design and manufacturing of custom molded rubber and plastic products for our OEM customers worldwide. From concept to finished molded component, our team of knowledgeable professionals works to ensure excellence in the product we deliver to our customers.

We are a R&D and Engineering focused company working to develop and deliver innovative solutions to our customers that allow them to achieve their goals. We support our customers with product design, material



**SHALIMAR** was established in 1986 with a discipline of advance rubber materials, molded rubber manufacturer processes and engineering and design services. As a leading molded rubber manufacturer **SHALIMAR** utilizes the latest in computer controlled manufacturing, testing and quality equipment to produce industry leading molded rubber components. Our team's passion is to deliver zero defect rubber products to our customer's exact specifications while maintaining competitive pricing necessary to ensure our customer's success in today's marketplace.

## QUALITY

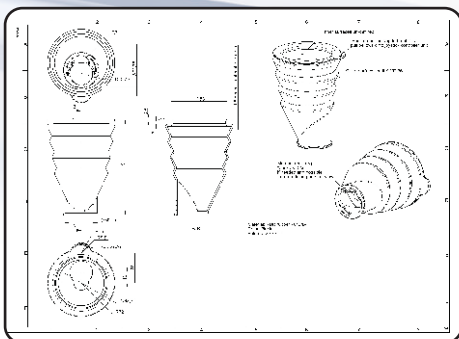
The Engineering and Technical Group at SHALIMAR works seamlessly with customers to design molded rubber seals and molded rubber components and select the best compound, or formulate custom compounds, to ensure each rubber component meets the application performance requirements. Proving to our customers we are a 'single source' molded rubber manufacturer able to excel at even the most demanding product requirements

We are client oriented organization and work towards delivering quality products to our esteemed clients. We offer wide range of products after complete quality inspection under various parameters. We do International quality standard packaging of these products as to deliver safely at the client's end throughout the world. We do quality inspection as to ensure salient features like Longer Shelf Life, Low Cost Maintenance and High Efficiency.

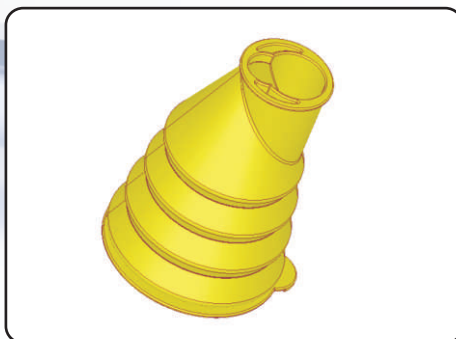
## RUBBER PROTOTYPING

For concept to precision molded rubber components, SHALIMAR has an experienced dedicated team focused on helping our customers take their concepts from design to completed solutions through our rubber prototyping and design services with silent features like.

- Rubber product design expertise
- Quick turnaround times, concept to product
- Extensive capability and experience supporting rubber prototyping services



2D Design



3D Design



Final Product

## INFRASTRUCTURE

We have established a state-of-the-art infrastructure facility at our premises, wherein our business process is executed in a streamlined manner. Spread over a vast area, this facility is installed with latest machines and equipments that enable us to utilize the resources in a judicious manner. Owing to the high production capacity of our infrastructure, we have been able to meet the increasing demands of our customers. Moreover, we have hired highly experienced and trained professionals to manage this facility.

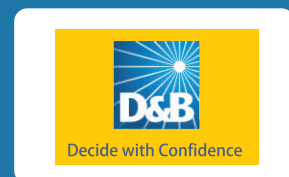
Apart from this, we have segregated our infrastructure into various sections such as manufacturing, quality testing, warehousing & packaging and administrative in order to maintain a streamline working environment.



## RECOGNIZED BY

We are members of various International Trade Promotion Organization of Government of INDIA :

- › Engineering Export Promotion Council (EEPC)
- › Federation of Indian Export Organization (FIEO)
- › India Trade Promotion Organization (ITPO)
- › Federation of Indian Chamber of Commerce & Industry (FICCI)
- › Chemical & Allied Products Export (CAPEXIL)
- › Indo- German Chamber of Commerce (IGCC)
- › ASSOCHAM
- › National Centre of Trade Information (NCTI)
- › Indo-American Chamber of Commerce (IACC)
- › Dun & Bradstreet (D&B)





# Molded Rubber Products

## FORMED HOSE PIPE

Rubber hoses or Formed hoses usually constructed with an inner tube, layer of reinforcement and an outer cover, handle fluid transport and containment in countless products.



## HYDRAULIC SEAL

A hydraulic seal is a relatively soft, rusher ring, captured in a groove or fixed in a combination of rings, forming a seal assembly, to block or separate fluid in reciprocating motion A hydraulic seal is a relatively soft rubber ring captured in a groove or fixed in a combination of rings, forming a seal assembly, to block or separate fluid in reciprocating motion applications.



## PLASTIC PARTS

Plastic Parts offers a variety of automobile parts including washers, bumper, bush, ring and many more.



## WHEELS & IDLERS

An idler-wheel drive is a system used to transmit the rotation of the main shaft of a motor to another rotating device.



## RUBBER COUPLING

A rubber coupling is a device used to connect two shafts together at their ends for the purpose of transmitting power.

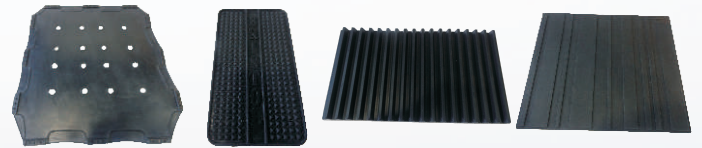


## RUBBER PADS & MATS

Rubber Pads & Mats is a specially compounded & designed to isolate vibration, resist or conduct electricity depending upon required conditions. Also made with FDA approved ingredients for kitchen use.

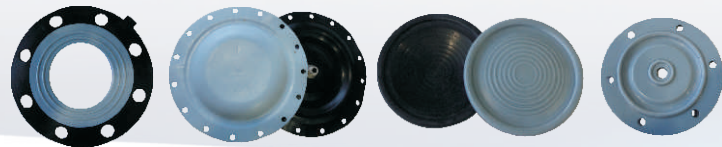
## VIBRATION ISOLATOR

Vibration isolation are used to isolating an object, such as a piece of equipment, from the source of vibrations.



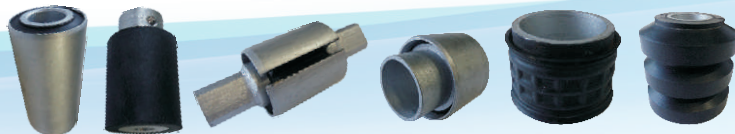
## RUBBER TO PTFE BONDED

PTFE rubber composite seals and gaskets have been used extensively in food processing where they allow processing of different foods without the risk of contamination from one product to another, due to the non-taint properties. In oil & gas it is used to resist any chemical etc.



## SILENT BLOCKS

A "silent block" is a block made of a flexible material like rubber and metal to absorb vibrations and shocks.

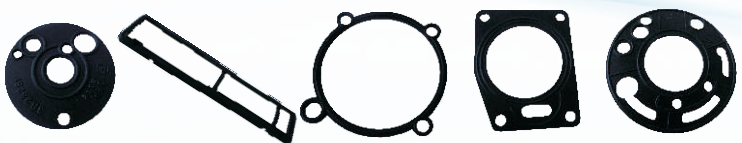
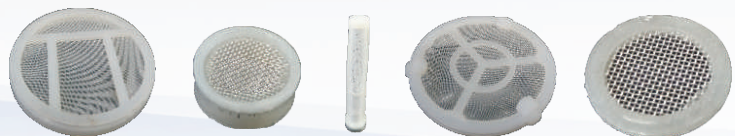


## SUCTION CUP

A suction cup, is an object that uses negative fluid pressure of air or water to adhere to nonporous surfaces and in the process creates a partial vacuum.

## PLASTIC FILTER

The filters are actually molded into the plastic part. Share Filtration can use plastic or stainless screens in the molding process. Depending on the size of the part a multi-cavity mold can be manufactured to increase production.



## GASKET

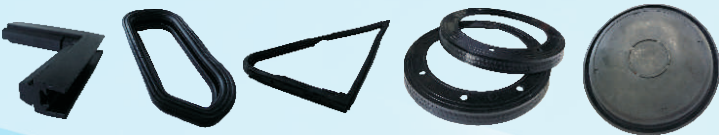
Shalimar offers rubber gasket in a variety of elastomers, sizes and shapes. All of our rubber gaskets are custom designed for your particular application enabling us to meet almost any specification.



# Molded Rubber Products

## CUSTOM MOLDED RUBBER

Our team will work with you from product concept to prototype and design development including rubber compound selection compression and stack up recommendations through the ongoing production of precision custom molded rubber products.



## CUSTOM RUBBER SEAL

Shalimar specializes in the design and manufacturing custom rubber sealing devices for both static and dynamic applications. Our rubber seals can be manufactured in a variety of shapes sizes and elastomers depending on your specific application.

## CENTER BEARING HOUSING

This part is designed specifically for your vehicle and has undergone extensive laboratory and on-the-road testing.



## CONVOLUTED BELLOW

Shalimar bellows and convoluted rubber dust boots are versatile seals used in a wide range of applications to seal dust and other environment elements in applications with a designed range of motion.

## BUTTERFLY VALVE SEAL

The butterfly valve seal is an indispensable component to seal off all three possible leakage routes - the pipe seal, the flange seal and the operating shaft seal in shut-off valves, flap or disk valves.



## CABLE GROMMET

Shalimar manufacturing a variety of rubber grommets in varying materials, shapes and sizes. All of our rubber grommets are custom designed for your application enabling us to almost any specification.

## BALL

Rubber ball are used in several fields like used for screening, cleaning etc.



## DIAPHRAGM

Our rubber diaphragms are custom-designed and engineered to operate for specific pressures changes mechanical requirements, fluid interaction, and dynamic life.

## FLOW CONTROL VALVE (RAILWAYS)

All of our flow control components are custom designed for your particular application enabling us to meet nearly any design.



## ENGINE MOUNTING

Engine mounts act like small cushions that absorb any movement between the engine and the car's frame.

## VIBRATION MOUNT

Designed to absorb the transmission of vibration and noise between a piece of equipment and whatever it is mounted on. Made of nature rubber with bonded in studs and inserts.



## RUBBER FENDER

Rubber Fenders are designed to prevent boats/ ships/ truck and the parking dock from being damaged during the mooring process or during berthing or parking process.



## SHALIMAR GROUP OF COMPANIES

- ◆ SHALIMAR RUBBER & PLASTIC INDUSTRIES
- ◆ SHALIMAR EXPORTS PVT. LTD.
- ◆ SHALIMAR INDUSTRIES

### HEAD OFFICE

📍 312, R.C. Trade Tower, Netaji Subhash Place,  
Pitampura, New Delhi - 110034 (INDIA)

☎ Ph : +91 11 27352466, 27351467, 47731114

📠 Fax : +91 11 27351468, 27672374

✉ Email : shalimar@shalimarrubber.com

🌐 Web : www.shalimarrubber.com